



FUTURE CITY LIFE

SEMINAR OF THE UBC COMMISSION ON URBAN PLANNING

23RD - 26TH APRIL • 2008 • ÅRHUS • DENMARK



FOREWORD ABOUT ÅRHUS

Århus is the 2nd largest city in Denmark right after Copenhagen. In July 2007 the city had 300,000 inhabitants, and an increase of app. 75,000 inhabitants is expected over the next 20 years.

In short, the strategic planning in Århus aims at the following:

- Århus must play an **important role** internationally as well as nationally
- Århus must remain a **dynamic city**
- Århus must have room for all **manner of people**
- A good city is a **sustainable city**
- A good city is a **healthy city**
- Improved **infrastructure** – less transportation by car, and better conditions for public transportation, walking and cycling
- **Nature** and green areas are resources, not barriers
- Two strategies for **urban development**:
 - Renewal, conversion and concentration of the existing city.
 - New urban areas in open fields
- Expectations and **plans** for the next 20 years:
 - 50,000 new jobs
 - 10-15,000 additional students
 - 50,000 new homes
- More and improved nature – and better **connections between the green areas**
- More **forest** – Århus is more or less surrounded by old and new forest
- More **water** in nature – e.g. new lakes and opening of the river
- Better **accessibility** to nature – plans for more and better paths, especially for cyclists and pedestrians – and the handicapped
- Clean drinking **water** for all –urban development must respect vulnerable drinking resources.



FUTURE CITY LIFE IN ÅRHUS, DENMARK

The theme of the seminar was *Future City Life*. The seminar theme was related to the current overall theme of the CUP, namely *Sustainable and Attractive Cities* and was meant as a discussion of the development of ideals and visions for sustainable and attractive cities as an overall theme – with special focus on how to create good living environments.

Other aspects that were discussed were human scale in modern cities, transformation of former industrial sites - without losing the historic perspective – and how to make cities “liveable” and sustainable as well as financially sound.

The participants arrived on a beautiful spring day. They were picked up at their hotel in the old city centre and were led to the Information Pavilion at the harbour for an informal get-together and a bite to eat. In the pavilion the participants viewed the large model of the early plans for the transformation of Århus’ former harbour areas – which we have also given short introductions to at previous seminars in Vilnius and Kotka.

Relocation of the industrial harbour to a new location and transformation of the former harbour area to a new urban quarter with housing, educational institutions and other city functions in its’ place, is one of Århus’ largest ongoing projects which we hope you will come and see again in maybe 5 years time!

The seminar included various lectures by Danish politicians, urban planners and architects as well as people from the Port of Århus – who also very generously hosted the seminar. We heard about the efforts from one of the largest regeneration projects in Denmark, *Developing Neighbourhoods* of the social housing scheme, Gellerup-parken in Århus. Other lectures focused on how to create

or transform urban spaces for people – and for Future City Life, so to speak.

This report includes brief summaries of the lectures, and actual copies of the slides can be obtained from the organizers by sending an e-mail to: hebi@aarhus.dk.

The seminar also included sightseeing around Århus – on foot and by bus. The walk took us through the city centre of Århus where we saw some of the recent developments around the river, the art museum ARoS and some of the transformed – and still-to-be transformed areas on the harbour front and the former railway terrain.

The bus tour took us to Gellerup-parken where Keld Albrechtsen, former MP –on behalf of the housing association – told us about the master plan for the transformation of Gellerup-parken. Another former MP, Sonja Mikkelsen showed us around the housing area and the ethnic bazaar, Bazar Vest. We also saw the recently completed nature project, Hasle Hills and a few other urban developments around the city.

In the interval between the two tours we had the good fortune to be able to visit one of Denmark’s largest architectural offices, C.F. Møller Architects at their new sky bar/-canteen. They have a spectacular view of the harbour and city centre, and they showed us some quite impressive projects which they are- and have been involved in. In Århus, the University is probably the most well-known large project by C.F. Møller Architects.

The seminar also included workshops about current urban planning problems in Århus on two different brown field sites on the harbour area and the old freight railway terrain.



Thursday evening was spent in the restaurant L'Olive in the old Latin Quarter, where everybody had a good opportunity to catch up on old friendships and make some new ones.

On Friday evening the Alderman for Technique and Environmental Concerns, Peter Thyssen hosted an official reception at the City Hall – designed by the well-known Danish architects Arne Jacobsen and Erik Møller. The reception was accompanied by music performed by another famous Dane, Jens Klüver and two colleagues from his Big Band.

Afterwards some of the participants went on to Discotheque Train for a little Pink Floyd Experience, while others, I believe, went out on the town.

On Saturday we heard presentations from the workshops and a presentation by Mikko Järvi from Tampere on the development project of Ratina.

Between the presentations Sirpa told us about future CUP activities and Lars-Göran told about the Visual Cities Project which several of the CUP member cities have joined.

Also, Ritva Nummiora gave us an appetizer for the next seminar in Turku/Åbo in Finland which takes place from 24-27th September 2008.

Niels-Peter Mohr and Heidi Milan Bilenberg wish to thank you all for coming to Århus. We hope that you had a good time here and that you will want to come back and visit us again some day!

Special thanks to:

Janne Greve and Bjarne Mathiesen at The Port of Århus for their help and hospitality.

Mads Møller at C.F. Møller Architects for their hospitality and presents

Visit Aarhus

Keld Albrechtsen and Brabrand Boligforening for an interesting lecture and visit

And last, but not least, all the colleagues at the Municipality of Århus for their help and support.



PARTICIPANTS AND WORKSGROUPS

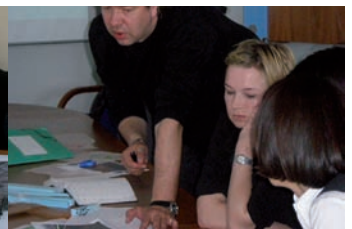
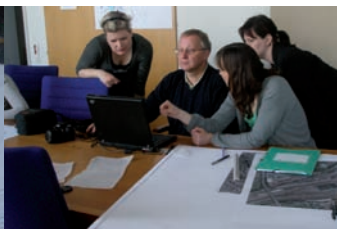
NAME	POSITION	COMPANY/ MUNICIPALITY	CITY AND COUNTRY	E-MAIL
WORKSGROUP 1 • GODSBANEN • GROUP A				
Vida Christeller	Architect	Copenhagen City, City design	Copenhagen, Denmark	vidchr@tmf.kk.dk
Rasa Budryte	Deputy head	Siauliai City Municipality	Siauliai, Lithuania	r.budryte@siauliai.lt
Sirpa Kallio	Chairperson of the UBC	City of Helsinki	Helsinki, Finland	sirpa.kallio@hel.fi
Carsten Nielsen	Architect/ town planner	Municipality of Rostock	Rostock, Germany	carsten-nielsen@freenet.de
Signe Rosenfeldt	Town planner	Municipality of Kolding	Kolding, Denmark	siro@kolding.dk
Ugis Kaugurs	Architect/ town planner	PLK Architects Ltd.	Liepaja Liepaja, Latvia	ugis_k@apollo.lv
Trine Essebo Olsen	Urban planner	Municipality of Kolding	Kolding, Denmark	tree@kolding.dk
Håkan Magnusson	Architect	Municipality of Sundsvall	Sundsvall, Sweden	hakan.magnusson@sundsvall.se
Hanna Montonen	Architect	City of Tampere	Tampere, Finland	hanna.montonen@tampere.fi
Lars-Göran Boström	Chief planner	Municipality of Umeå	Umeå, Sweden	lars-goran.bostrom@umea.se

WORKSGROUP 1 • GODSBANEN • GROUP B

Gundars Ukis	Specialist	Jurmala City Council	Jurmala, Latvia	gundars.ukis@jpd.gov.lv
Ilze Vicepa	Territorial planner	Jurmala City Council	Jurmala, Latvia	ilze.vicepa@jpd.gov.lv
Uta Jahnke	Expert heritage protection	Municipality of Rostock	Rostock, Germany	uta.jahnke@rostock.de
Marek Karzynski	Deputy head	Municipality of Gdyn	Gdynia, Poland	m.karzynski@gdynia.pl
Ilona Igovena	Spatial planner	Rezekne City Council	Rezekne, Latvia	ilona.igovena@rezekne.lv
Agnieszka Rózga-Micewicz	Urban planner	Gdansk Development Agency	Gdansk, Poland	agrg1@poczta.onet.pl
Gunilla Kronvall	Architect	Malmö City, Planning office	Malmö, Sweden	gunilla.kronvall@malmö.se
Anne Pettersson	Urban planner	Örebro Municipality	Örebro, Sweden	anne.pettersson@orebro.se
Helena Johansson	Traffic planner	Örebro Municipality	Örebro, Sweden	helena.johansson@orebro.se
Ulrika Gillberg	Architect	Örebro Municipality	Örebro, Sweden	ulrika.gillberg@orebro.se
Solvita Kalvite	Head of Public	Riga City Council	Riga, Latvia	kalvite.solvita@riga.lv

WORKSGROUP 2 • MIDTKRAFT • GROUP C

Eija Muttonen-Mattila	Architect	The City of Vaasa	Vaasa, Finland	eija.muttonen-mattila@vaasa.fi
Karin Elfström	Deputy heda	Linköping Municipality	Linköping, Sweden	karin.elfstrom@linkoping.se
Viktoria Fagerlund	Comprehensive planner	Linköping Municipality	Linköping, Sweden	viktoria.fagerlund@linkoping.se
Georg Unna	Architect/ town planner	Municipality of Kolding	Kolding, Denmark	geun@kolding.dk
Samuli Saarinen	Researcher	City of Turku	Turku, Finland	samuli.saarinen@turku.fi
Thomas Henschel	Landscape architect	Henschel Landschaftsarchitekt	Rostock, Germany	landschaft.henschel@gmx.de
Mikko Järvi	Project architect	City of Tampere	Tampere, Finland	mikko.jarvi@tampere.fi
Stina Fahlgren	Architect	Municipality of Umeå	Umeå, Sweden	stina.fahlgren@umea.se
Christine Bonn	Landscape architect	Vaasa City planning	Vaasa, Finland	christine.bonn@vaasa.fi
Malin von Sicard	Engineer	Sundsvall Municipality	Sundsvall, Sweden	malin.sicard@sundsvall.se
Ville Vastamäki	Project Engineer	City of Helsinki	Helsinki, Finland	ville.vastamaki@hel.fi



NAME	POSITION	COMPANY/ MUNICIPALITY	CITY AND COUNTRY	E-MAIL
WORKSGROUP 2 • MIDTKRAFT • GROUP D				
Marja Kukkonen	Architect/Detailed plans	Kotka	Kotka, Finland	marja.kukkonen@kotka.fi
Markku Hannonen	Architect/Master Plans	Kotka	Kotka, Finland	markku.hannonen@kotka.fi
Anita Banaszak	Senior assistant	Municipality of Gdynia	Gdynia, Poland	a.banaszak@gdynia.pl
Sirkka Wegelius	City architect	Mariehamns City	Åland, Finland	sirkka.wegelius@mariehamn.ax
Jaana Solasvuo	Researcher	Turku City	Turku, Finland	jaana.solasvuo@turku.fi
Jussi Kautto	Architect SaFa		Helsinki, Finland	jussi.kautto@ruoholahdenpuisto.fi
Ineta Buka	Chief architect	Jekabpils municipality	Jekabpils, Latvia	ineta.buka@jekabpils.lv
Andreas Schubert	Senior Expert	Rostock City	Rostock, Germany	andreas.schubert@rostock.de
Dorota Kucharczak	Urban planner	Gdansk development agency	Gdansk, Poland	dorkuch@op.pl
Ilze Jankovska	Project manager	Riga City Council	Riga, Latvia	ilze.jankovska@riga.lv
Gaidis Balodis	Spatial planer	Riga City Council	Riga, Latvia	gaidis.balodis@riga.lv
Ritva Nummiora	Landscape architect	Turku City	Turku, Finland	ritva.nummiora@turku.fi

OUTSIDE WORKGROUPS

Heidi Milan Bilenberg	Town Planner	Planning and Building	Aarhus, Denmark	hebi@aarhus.dk
Anne Lundager	Nature and Environment	Municipality of Aarhus	Aarhus, Denmark	
Birgitte Poulsen	Nature and Environment	Municipality of Aarhus	Aarhus, Denmark	
Tina Seerup Olesen	Nature and Environment	Municipality of Aarhus	Aarhus, Denmark	
Susanne Egelund	Nature and Environment	Municipality of Aarhus	Aarhus, Denmark	
Vivi Pedersen	Nature and Environment,	Municipality of Aarhus	Aarhus, Denmark	
Britta Johannesen	Nature and Environment,	Municipality of Aarhus	Aarhus, Denmark	
Niels-Peter Mohr	Head of Comprehensive Planning - Planning and Building	Municipality of Aarhus	Aarhus, Denmark	npm@aarhus.dk



SEMINAR AGENDA

TIME	EVENT	VENUE
WEDNESDAY 23RD APRIL		
19:00	Informal “get-together” with Registration at Hotel CabInn + dinner	Meeting place at Hotel CabInn -and walk to Information Pavilion at the harbour
THURSDAY 24TH APRIL		
8:30	Registration at Havnehuset for late arrivals	Havnehuset
9:00	Welcome speeches by Mrs. Sirpa Kallio, CUP-chairperson, and the Alderman for Technical and Environmental Concerns, Peter Thyssen	Plenumroom, Havnehuset
9:20	Lecture: Aarhus´ main projects - and thoughts about the topic for the seminar by Head Architect of comprehensive planning Mr. Niels-Peter Mohr	Plenumroom, Havnehuset
10:00	Coffee break	Plenumroom, Havnehuset
10:30	Lecture: Bjarne Mathiesen CEO, about The Port of Aarhus	Plenumroom, Havnehuset
10:50	Lecture: “Transition from deprived housing area to an attractive part of the city” by Sonja Mikkelsen, Project Manager: Developing Neighbourhoods	Plenumroom, Havnehuset
11:40	Information about the Interreg Projects application - by the CUP steering committee	
11:50	Introduction to the city walk by John Kristensen (Architect, Dept. of Urban Design)	Plenumroom, Havnehuset
12:00	Lunch	Canteen Havnehuset
13:00	City walk in Aarhus	Aarhus city
14:00	Coffee break	“Europahuset“ skybar at C.F. Møller Architects
15:00 -18.00	Sight seeing in Aarhus , and excursion to the 2 workshop sites	Aarhus
19:00	Informal dinner in the Latin Quarter of Aarhus	L´Olive, Mejlgade



TIME	EVENT	VENUE
FRIDAY 25TH APRIL		
9:00	Lecture: Sustainable Cities are People Cities - Challenges in the 21st Century City” by Ewa Westermark (Gehl Architects)	Plenumroom, Havnehuset
10:00	Coffee break	Plenumroom, vnehuset
10:30	Lecture: “Planning the cultures of cities” by Søren Møller Christensen (Hausenberg Aps.)	Plenumroom, Havnehuset
11:30	Lunch Canteen Havnehuset	
12:30	Lecture: “Transformation of Ruinous Industrial Landscapes”” by Ellen Braae, Associate Prof. Landscape Architect PhD (The Aarhus School of Architecture)	Plenumroom, Havnehuset
13:30	Working groups	Workshop-rooms
14:30	Coffee break	Plenumroom, vnehuset
14:45	Working groups	Workshop-rooms
19:00-23:00	Reception hosted by the Alderman for Technical and Environmental Concerns, Peter Thyssen	Receptionroom at the City Hall

SATURDAY 26TH APRIL

9:30	Working groups – prepare presentations and proposals	Workshop-rooms
10:30	Coffee break	Plenumroom, vnehuset
11:00	Working groups: Presentations and proposals for the 2 sites. Max. 20-25 min. pr. group	Havnehuset
12:30	Closing the seminar , reminder about the Interreg Projects application and short introduction to the next seminar by the next host city Turku/Åbo	Plenumroom, Havnehuset
13:00	Lunch	Canteen vnehuset
14:00	End of the seminar. Individual programme – leisure, travel...	



PRESENTATION OF THE LECTURES

THURSDAY

SONJA MIKKELSEN:

Transition from deprived housing area to an attractive part of the city

*Project Manager: Developing Neighbourhoods.
The Lord Mayor's Office, The Municipality of Aarhus.
DK 8100 Aarhus C. Phone: + 45 89 40 22 45
Email: sm@aarhus.dk, www.aarhuskommune.dk, www.urbanbydel.dk*

Brief summary of the lecture:

In six years the EU-Urban II programme was run in the Aarhus Westside – a housing area with 20.000 inhabitants – in average the poorest in DK. The results are remarkable, especially within citizens participations, and to day the citizens in the area are among the most responsible for there neighbourhood, you can have. The social and economical projects mainly with citizens in the lead, are now followed by a dramatically physical change of the biggest social housing area build in the late 60's. in a cooperation among the housing company and the Municipality. It will also include partnerships with private investors.

FRIDAY

EWA WESTERMARK:

Sustainable Cities are People Cities - Challenges in the 21st Century City

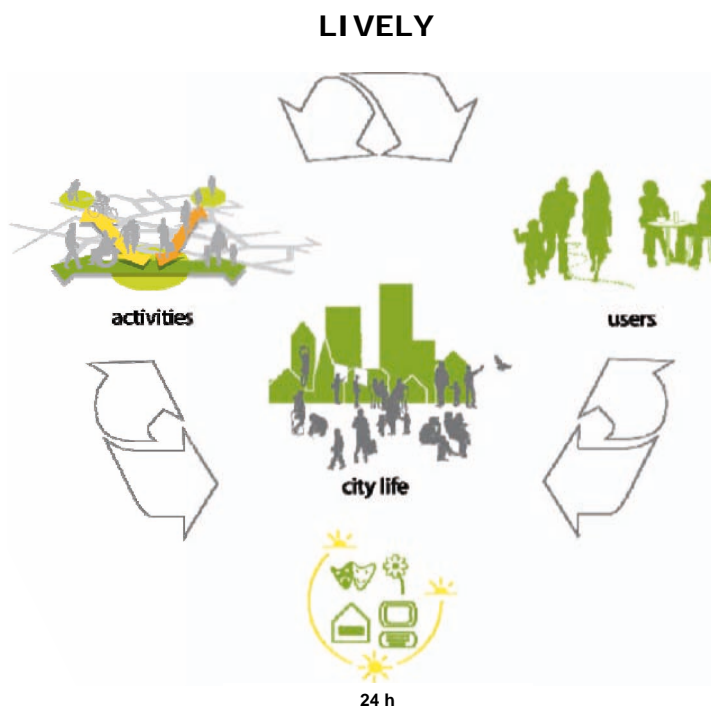
Architect and Urban Planner, Associate at Gehl Architects – Urban Quality Consultants

The work of Gehl Architects is based on Jans Gehl's 40 years of extensive research on life in public spaces. The research deals with the many factors that influence public life and public space and how people use it. The study of people's well-being lays the foundation for the formation of strategic planning and design work. Gehl Architects' vision is to create cities that are lively, healthy, diverse and safe - and thereby improve people's quality of life.

Brief summary of the lecture:

The 21st century brings us a set of new challenges if we want to create Sustainable Cities. Many of the same aspects make Cities both liveable and sustainable. Today there are 6-9 times less people per Hectare than 100 years ago - how can we create lively cities? Today we live a more privatised life – how do we get people to meet?

Today we spend more time indoors – What can we do to invite people to spend time in Public Space? Today we can see many deserted new harbour front developments – how do we bring people to the water? Today we see many segregated city areas - what can we do to support a diverse city? Today many new developments has lost track of scale – how do we introduce human dimensions in planning?





SØREN MØLLER CHRISTENSEN:

Planning the cultures of cities

Director and co-owner, Hausenberg. Ethnologist, University of Copenhagen. Born 1975

Brief summary of the lecture:

What makes a good city? Many have tried to give the correct answer by setting up guidelines for the right design, and all of them have failed to succeed. Why? Because the most correct description of a real city, is a place where nobody has the power – or ability – to describe the culture of the city. There must always be many cultures in a city; there must be many different and conflicting truths and dreams. That's what makes a real city! But what about planning, then? Can planning operate in a place where you don't have one privileged truth? The lecture will investigate this question and argue that it is possible, if we expand the fields of planning by including the more chaotic field of culture. We must plan for the cultures of cities, but we must do it in a way, that gives room to the different truths and dreams of our cities.

ELLEN BRAAE:

Transformation of Ruinous Industrial Landscapes

*Associate Prof. Landscape Architect PhD, Institute for Landscape and Urbanism, The Aarhus School of Architecture
ellen.braae@aarch.dk /www.aarch.dk*

Brief summary of the lecture:

Throughout the Western part of the World harbours and the industrial areas are changing rapidly. In Western Europe the Ruhr Region holds a prominent position as the pivot of industrial changes. As its history contains all aspects of the transformation from industrialism to post-industrialism, it is chosen as prism for a description of this new post-industrial landscapes. From the Gründerzeit in the 19th Century to the 1960s and 70s the Ruhrgebiet represented the industrial region par excellence and served as the core engine of the industrial development in Germany. Later on the region faced a deindustrialisation process, which intensified when Germany joined the EU. This process continued after fall of the Wall and has caused numerous effects in almost all sectors of the society: in the physical, social, cultural, and economical infrastructures. One might say that the Ruhrgebiet and the Nordrhein Westfalen once again and forced by the circumstances have taken on the role as a laboratory of development for the changes in Europe's geographical structures. This time as a platform for the most eminent post-industrial landscapes and identities.w



WORKGROUP 1

GODSBANEN

(THE FORMER FREIGHT RAILWAY AREA):

HISTORY AND BACKGROUND INFORMATION

For more than 85 years the freight railway yard has been one of the town's active business areas, but with the change in freight transportation methods to e.g. sea transportation, the freight railway function is no longer needed.

When the freight railway yard was built, it was located on the outskirts of town, but since then the town has greatly expanded around it, so that the area is today quite centrally located - in the city centre. It is very likely that the surrounding industrial/business areas (to the north, south and west of the freight railway yard) will also be converted within the next few years.

The area in question is located in the vicinity of quite a few other cultural institutions in the city centre, and it is also close to the Aarhus River (Århus Å) and The Brabrand Pathway (Brabrandstien, a quite long recreational path) which is the primary recreational access road, when approaching Aarhus from the west.

The area is heavily polluted, and it will continue to be polluted/adversely affected by noise from the railways to the south-east, thus preventing the use of the area for any noise-sensitive purposes (e.g. homes).

FACTS

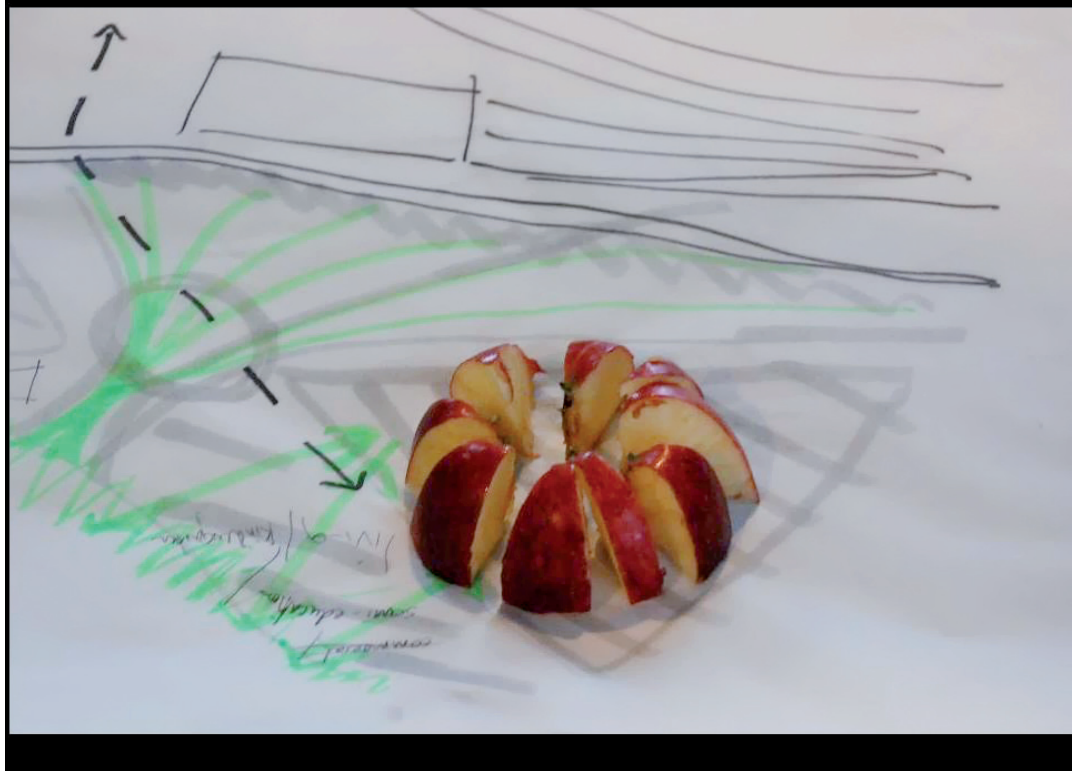
The overall size of the area is approx. 100,000 m². The main building (in the northern end of the area), the workshop buildings and a few other buildings are considered worthy of preservation – but they are not “listed” buildings, so it can not be ruled out, that they can be either altered or partly removed.

PLANS

The Municipality of Aarhus is planning to create a *cultural production centre*, housing many different cultural activities in app. 8,000 m² of the buildings and site located in the northern end of the area (blue area). Places and facilities for skaters are also an option, but the rest of the

35.000 m² of the northern area are not yet planned for. The Municipality wishes to establish a “multi-arena” with room for 15.000 spectators in the southern end of the area (red area) – and are open for suggestions onto which other functions may create an active and financially sound area here.

The Municipality of Aarhus wants the area to be *open* with a wide variety of activity types – and with paths, “tying” the area to the rest of the surrounding neighbourhood.



WORKGROUP 2

MIDTKRAFT- OG SLAGTEHUSOMRÅDET

(THE SITE PREVIOUSLY HOUSED THE AARHUS CHP (COMBINED HEAT AND POWER) PLANT AND A SLAUGHTERHOUSE)

LOCATION

The site is located between an existing industrial harbour area to the east and the southern part of the city area to the west. To the north the site borders on Aarhus' historic city centre, at the outlet of the Aarhus river into the harbour.

FORMERLY USED FOR

In the late 19th century the site was converted from beach area into an industrial site and electricity- and gas plants. The gas plant was closed in 1982 and the CHP plant *Midtkraft* was in operation until 1995. Since 1895 the southern end of the site has housed a municipal slaughterhouse which is still in operation today. The plan is to relocate the slaughterhouse in 2017.

After the closure of the CHP plant, the City Council decided that the area and the buildings should be used as municipal administration offices and *Århus Filmby* (Aarhus Film Production Centre) – a project launched to unify the commercial part of the local film industry in a central location in Aarhus.

PRESENTLY USED FOR

The site and most of the buildings are owned by the municipality, and today they house municipal administration offices, heating plant, transformer station, film production centre, temporary parking areas, petrol station, various businesses, offices, abattoir and a few private homes.

One set of freight railway tracks, leading to the Eastern Harbour (main industrial harbour area), cut across the northern end of the site. South of these tracks, a new harbour railway connection is under construction, replacing the existing tracks.

EXISTING PLANS FOR THE AREA:

The site forms part of a 5 km long city development area along the harbour front – named *De Bynære Havnearealer* (The Aarhus Docklands). In 2005 the City Council passed an addition to the Municipal plan – *Kvalitetshåndbog for De Bynære Havnearealer* (Quality Manual for the

Aarhus Docklands) – which determines the overall guidelines for the conversion of the area.

One of the fundamental ideas of the Quality Manual is that a recreational connection should be created through the entire length of the conversion area (from the north to the south). The main principle of the 'connection' is a path for pedestrians and cyclists parallel to a canal or a 'canal motif'. Furthermore, the Quality Manual determines the location, the extent and the usage of new settlement.

It has subsequently been decided that a more detailed masterplan is to be worked out prior to the public procurement of the area.

A new District Plan for the extension of *Århus Filmby* (Aarhus Film Production Centre) is currently in preparation.

GENERAL CONSIDERATIONS AND CONDITIONS REGARDING USAGE

The Quality Manual for the site determines that approx. 57,000 m² of floorage may be built south of the new harbour railway connection. The plan is that most of the existing buildings on the site are demolished. Furthermore, north of the harbour railway connection approx. 8,000 m² of floorage may be built in addition to *Århus Filmby* (Aarhus Film Production Centre). The maximum building height laid down in the Quality Manual is 20 metres in the area south of the new harbour railway connection and 25 metres in the area north of the railway connection. However, it may be possible to make exemptions for a few taller landmarks.

The intention is to use the area for business purposes (primarily office- and cultural purposes).

Within the last few years the Municipality of Aarhus has received a number of enquiries from companies and institutions, wishing to set up business in the area.

Based on a current request from an investor, wishing to build a large conference hotel on the site, it has been decided to re-evaluate the guidelines for building in the area, allowing a taller and more open development.

In connection with the masterplan, the design and the shaping of the recreational connection must to be determined, including how the crossing of the harbour railway connection can be made attractive.

The City Council emphasises the importance of creating lively public spaces in the new city development area. The aim is to incorporate various facilities for sport and health-related activities into the site development.

Several of the buildings on the site have been identified as 'worthy of preservation'. A few of these are part of the overall plan, while others are not 'compatible' with the overall plan. Today, the preserved turbine buildings have been converted into Århus Filmby (Aarhus Film Production Centre). It is being considered to preserve the crane construction, formerly used for the coal store rooms in the electricity and gas plants.

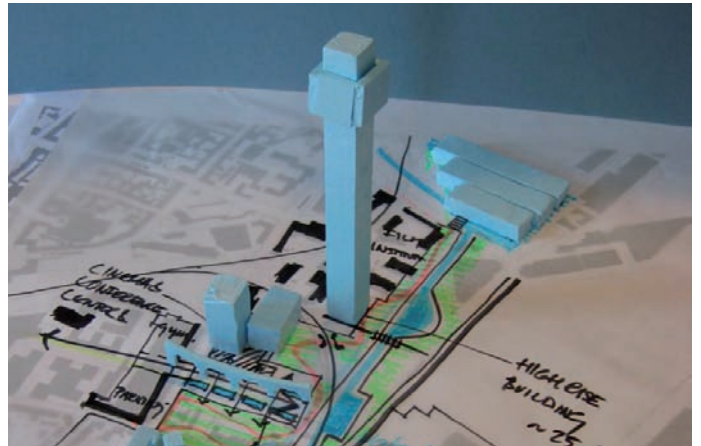
The new harbour railway connection is a distinctive and dominating structure and therefore it presents a challenge in regard to future planning of the area.

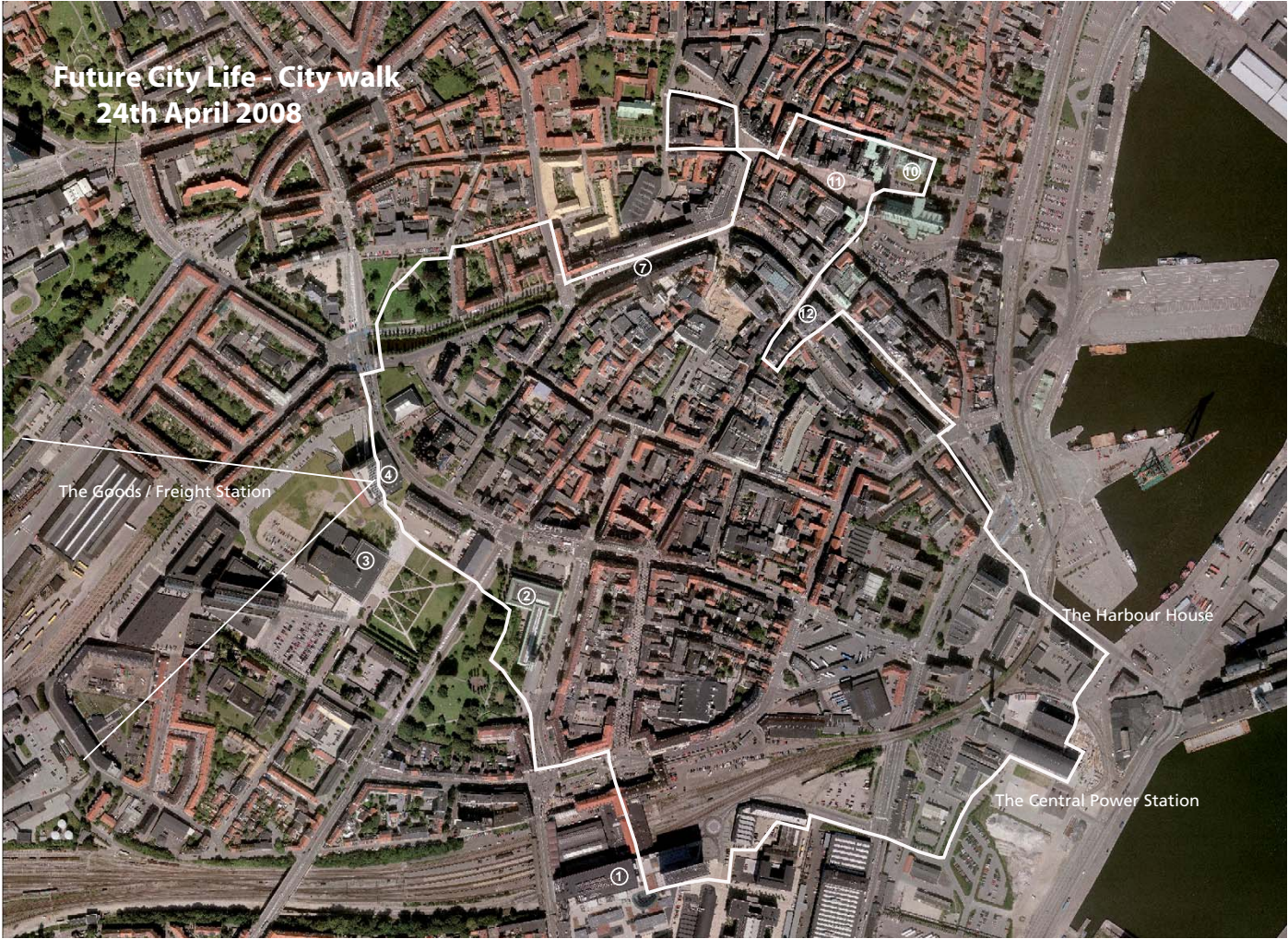
The overall traffic plan for the area determines that the road connection to the site will be from *Spanien/Jægergårdsgade*. The connection eastwards will be shut, preventing harbour traffic to pass through the area. The plan is that the road connection to the areas north of the existing harbour railway connection will be from the south via *Sydhavnsgade*.

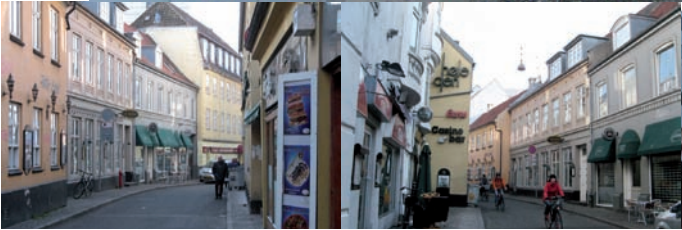
It is the intention to have public parking spaces in the area and attractive paths to connect the parking areas to the City. The Quality Manual mentions the possibility of utilising the tracks of the former coal crane for this connection.

Large sections of the site are polluted as a result of the site's previous applications (CHP- and gas plants).

Two neighbouring oil production factories entail the risk of explosions. This may result in limitations to the future utilisation of the area. Due to a serious explosion in one of the factories at the end of 2007 there is presently much focus on the risk evaluation of the factories.



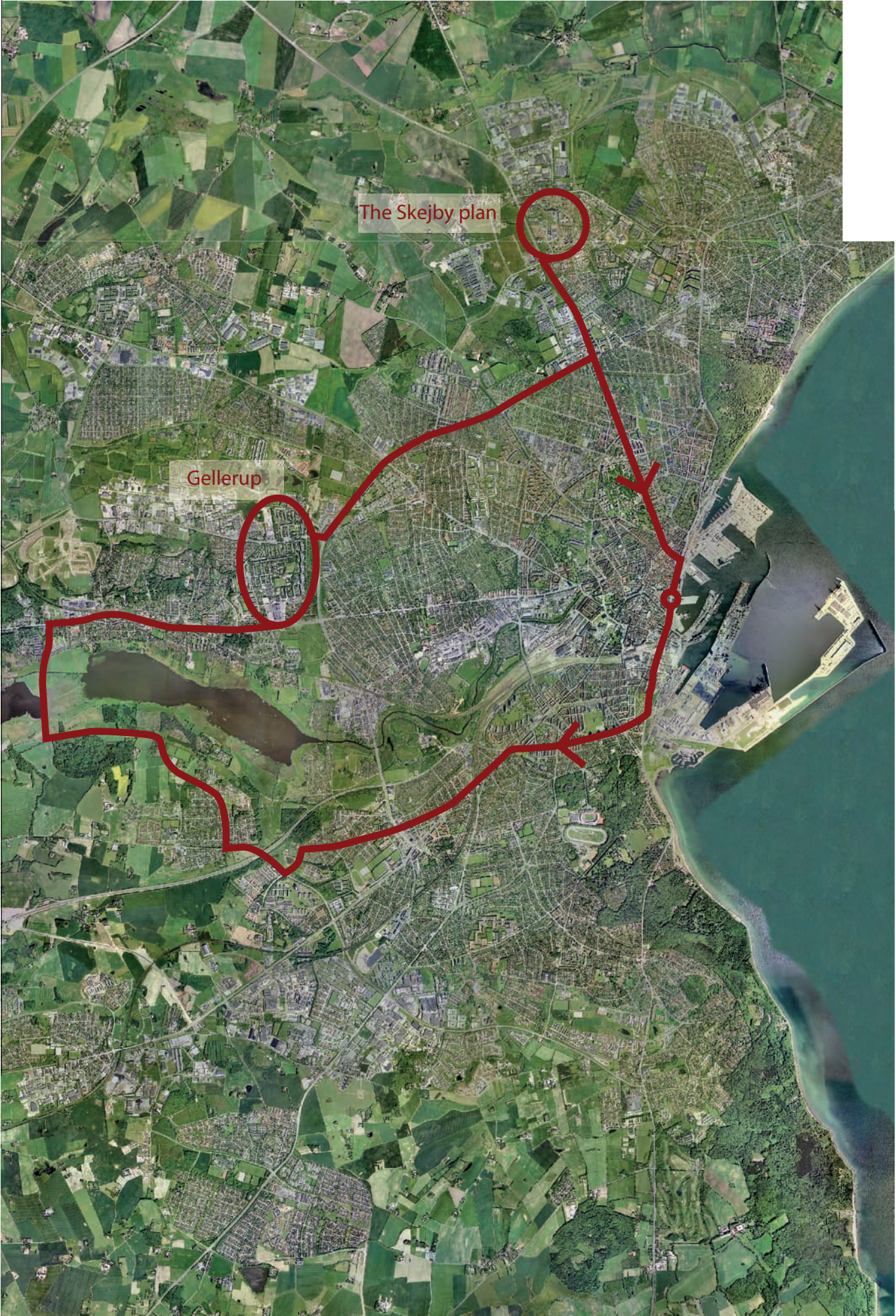




Excursion April 24th 2008

- 15.00:** Departure from Europa Plads. Entrance C.F. Møllers Office. Introduction to the tunnel project for Marselis Boulevard and the new Årslev Lake west of the Brabrand Lake.
- 15.30:** The renewal plan for the Gellerup housing area. Visit in the CityVest shopping mall, introduction in the Gellerup Theater to the renewal plan by Sonja Mikkelsen, chief consultant for the project, and Keld Albrecht-sen, chairman for the Brabrand Housing Association.
- 16.00:** A walk through the housing area including a visit to Bazar Vest, an oriental market set in an former factory building and a visit to Hasle Hills, an artificial landscape, created of soil left over from building sites.
- 16.50:** Departure from Lenesvej.
- 17.00:** Visit at Skejbygård housing area. A variation of modern danish housing examples.
- 17.45:** Departure Skejbygård. Skejby Hospital. Introduction to the plans for the extension.
- 18.00:** Arrival Europa Plads.

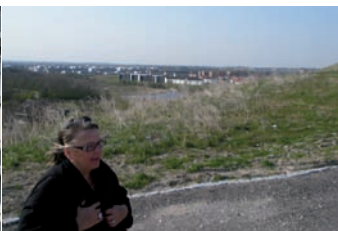
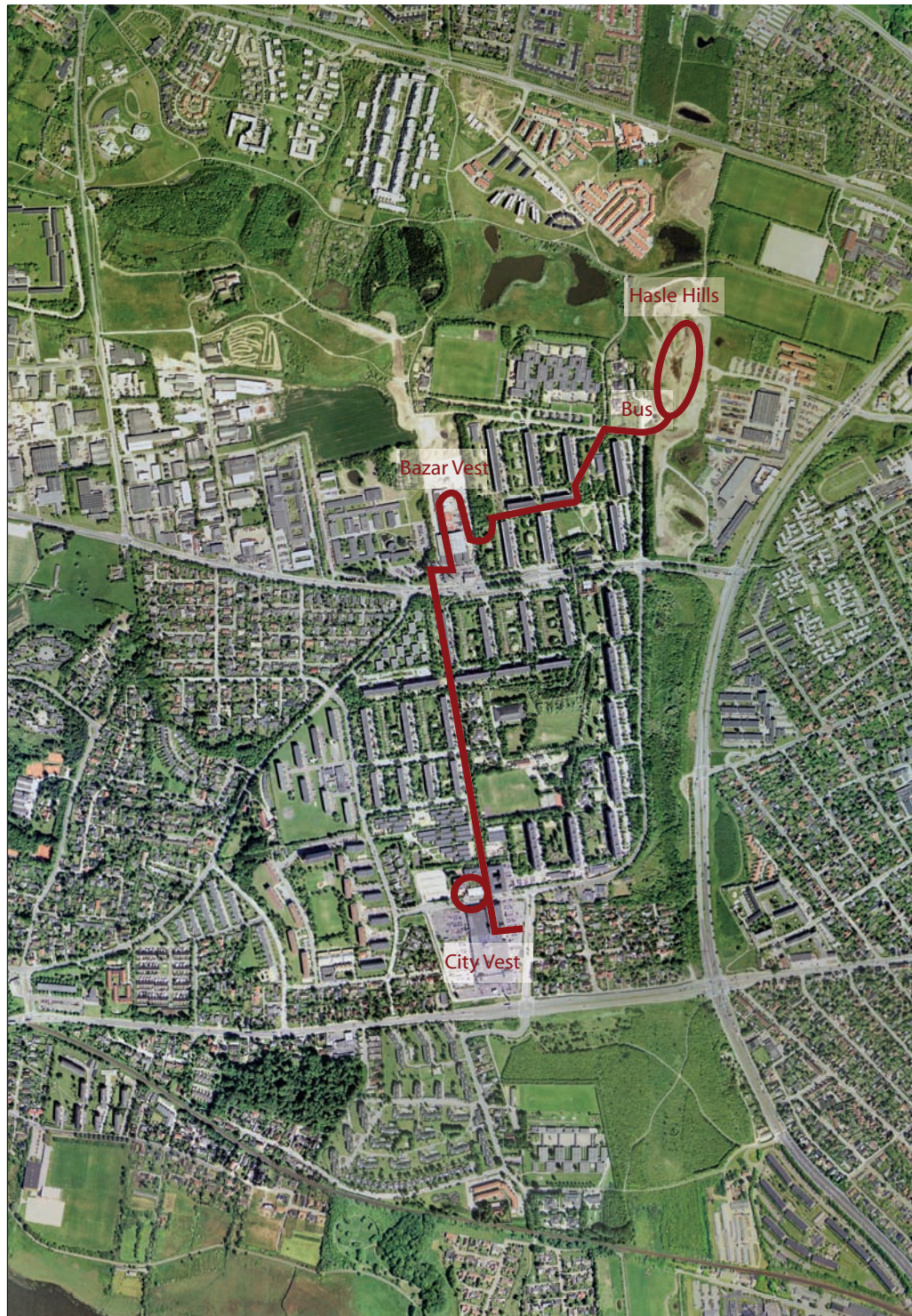




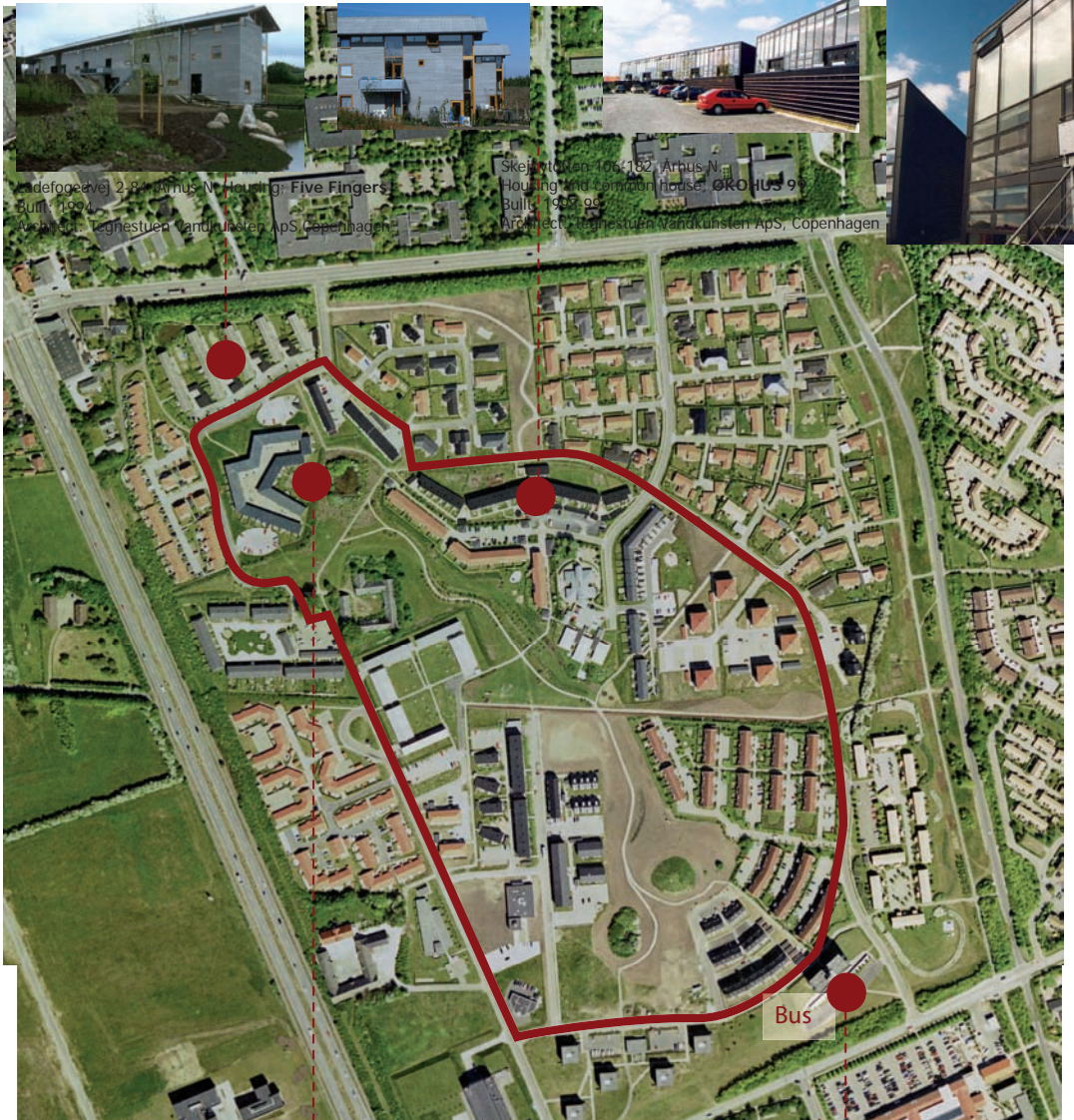
The Skejby plan

Gellerup

Excursion April 24th 2008
Gellerup



Excursion April 24th 2008
Skejbygård Housing



Ladefogedvej 55-129B, Århus N. Housing
 Built: 2001
 Architect: Tegnestuen Vandkunsten ApS, Copenhagen



Skejby Vænge 1, Århus N.
 Housing for youngsters
Two Towers
 Built: 1993-94
 Architect: Jan W. Hansen, Gøsta Knudsen ApS. arkitekter MAA, Århus



Ladefogedvej 2-8, Århus N. Housing: Five Fingers
 Built: 1994
 Architect: Tegnestuen Vandkunsten ApS, Copenhagen

Skejbytorven 106-182, Århus N.
 Housing and common house: OKOHUS 9
 Built: 1999-00
 Architect: Tegnestuen Vandkunsten ApS, Copenhagen



'Future City Life'
Seminar of the UBC Commission on Urban Planning
23rd-26th April 2008



**Union of the Baltic Cities,
Commission on Urban Planning
invites you to an official reception**

Friday April 25th 2008

at the City Hall,
reception room
Rådhuspladsen 2
Århus C
Denmark

Time 19.00-23.00 o'clock

Programme

The Alderman for Technique and Environmental concerns Peter Thyssen and the Chairwoman of the UBC Commission on Urban Planning Sirpa Kallio will say a few words.

There will be a little to eat and drink accompanied by music from the renowned Danish Jazz Musician Jens Klüver and friends, and we hope that you will join us for a night of leisure and networking!

For further information, please contact

> Heidi Milan Bilenberg
hmb@sa.aarhus.dk
or Phone no. 8940 2622





